



# Architecture Drawings

## 01

Master Layout **.01**  
Floor Plans **.02**  
Section **.03**

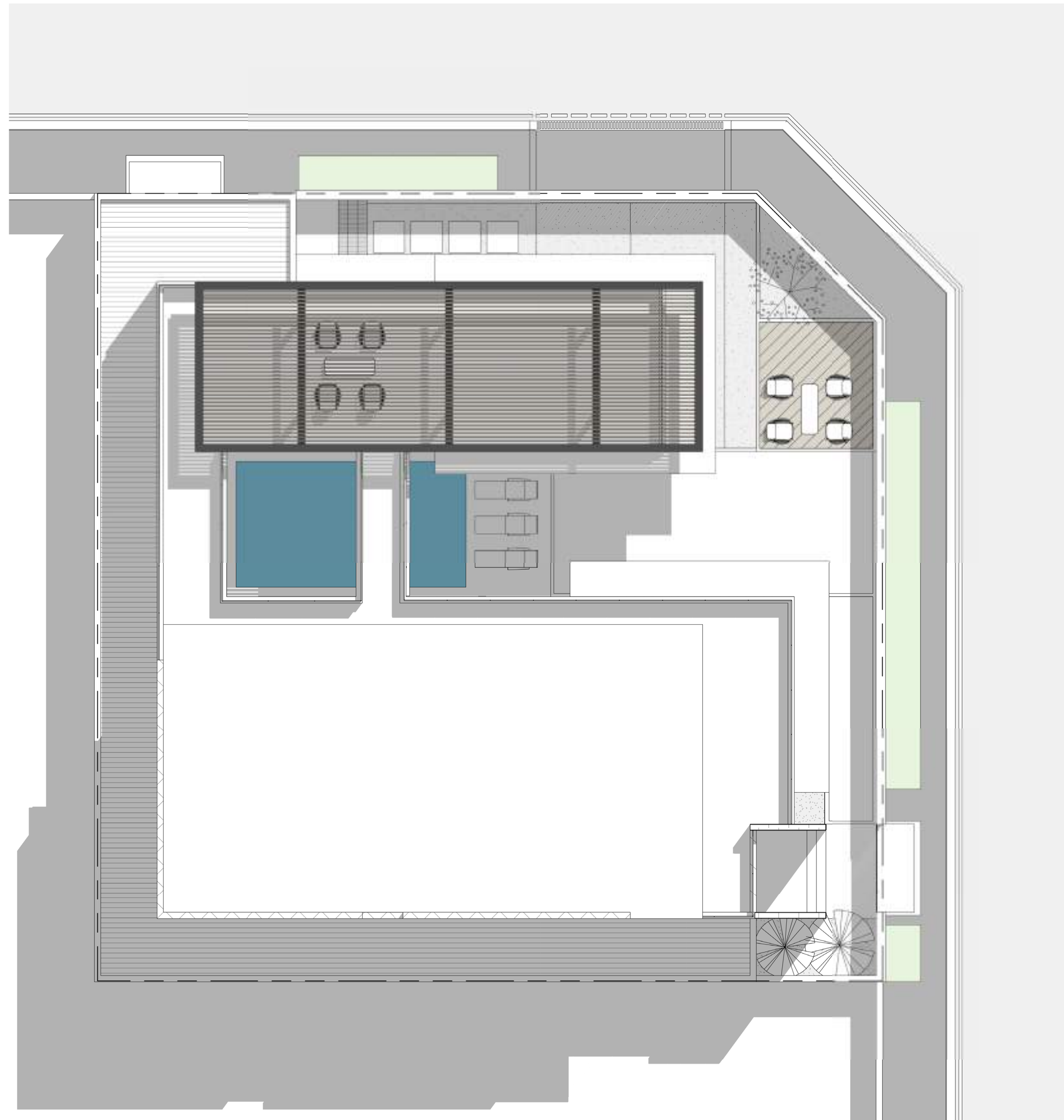
# 01. Master Layout Site Plan

## FLOOR AREAS

FLOOR	AREA
GROUND FLOOR	340 sqm
BASMENT FLOOR	105 sqm
FIRST FLOOR	299 sqm
ANNEX FLOOR	125 sqm

Land Area: 617 sqm

Total Floors Built Area: 868 sqm



## 02. Floor Plans

### Ground Floor

SPACE	DIMENSIONS	AREA
SALON	7.00m*5.60m	39 sqm
DINING	7.00m*5.30m	37 sqm
LIVING 1	9.80m*5.50m	54 sqm
LIVING 2	3.80m*4.60m	17 sqm
OPEN KITCHEN	3.80m*7.00m	26 sqm
DIRTY KITCHEN	3.80m*4.60m	17 sqm
DEWANYA	9.40m*5.40m	47 sqm
POOL	8.00m*4.00m	32 sqm
LAUNDRY	3.30m*1.80m	5.9 sqm
MAIDS ROOM	5.30m*1.80m	9.5 sqm
PANTRY	2.00m*1.80m	3.6 sqm
DRIVERS ROOM	2.90m*2.60m	7.5 sqm

Land Area: 617 sqm

Ground Floor Built Area: 340 sqm



## 02. Floor Plans

### First Floor

SPACE	DIMENSIONS	AREA
MASTER BEDROOM	8.0m*4.8m	38 sqm
MASTER CLOSET	4.8m*4.4m	21 sqm
MASTER BATHROOM	3.6m*2.9m	10 sqm
MASTER DRESSING ROOM	4.6m*1.8m	08 sqm
BEDROOM 1	5.3m*3.6m	19 sqm
BEDROOM 2	4.8m*4.1m	20 sqm
DRESSING ROOM	4.9m*4.1m	20 sqm

Land Area: 617 sqm

First Floor Built Area: 298 sqm



## 02. Floor Plans

### Annex Floor

SPACE	DIMENSIONS	AREA
BEDROOM 1	5.00m*4.1m	20 sqm
LIVING	8.50m*5.0m	42 sqm
KITCHENETTE	3.60m*1.8m	06 sqm
OUTDOOR AREA	15.7m*5.0m	78 sqm

Land Area: 617 sqm

Annex Floor Built Area: 125 sqm



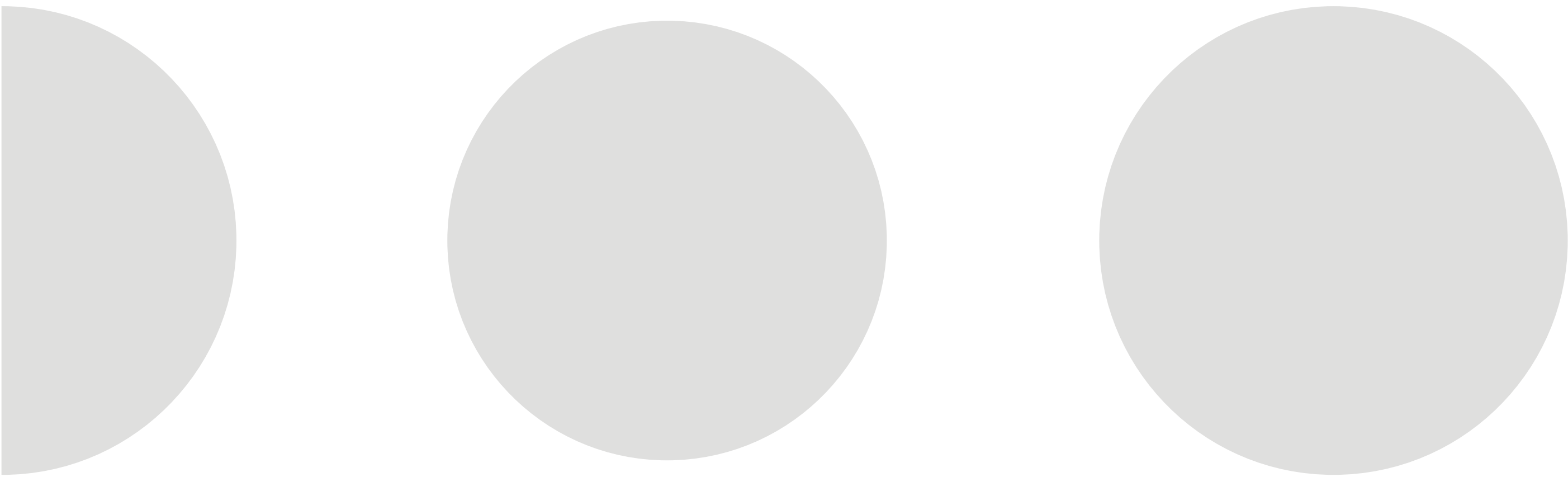
# 03. Section



PRESPECTIVES

**02**

3D RENDERS







SPEED  
LIMIT  
40

ماله





































SPEED  
LIMIT  
40

ماله



















